

Manual control for all thermostatic valves.
• Handle and support included



ART. 1950

Code	€	box
1950		10

Regulating handle for radiator valves
(Art. 1050-1250-1150-1350-1585-1590).



ART. 8100

Code	size	€	box
8100 1238	1/2"-3/8"		10
8100 34	3/4"		10
8100 1	1"		10

Handle for manual single-pipe valves
(Art. 1455-1463-1473).



ART. 8110

Code	€	box
8110		10

Regulating handle for Art. 1450.



ART. 8125

Code	€	box
8125		10

Regulating handle Art. 1451.



ART. 8126

Code	€	box
8126		10

Regulating handle for Art. 1550.



ART. 8130

Code	€	box
8130		10

Manual control for filling unit
(Art. 2100-2105-2106-2110).



ART. 8140

Code	€	box
8140		10

Manual control for MULTIFAR manifolds.



ART. 8980

Code	€	box
8980		10

Manual control for THERMO-ELECTRIC manifolds.



ART. 8990

Code	€	box
8990		10

Manual control for thermostatic mixer

- Art. 8120 N (Art. 3950-3951-3956-3957-2167-2174-2178-2184)
- Art. 8120 A (Art. 3953-3954-3955)

ART. 8120

Code	colour	€	box
8120 N	black		10
8120 A	orange		10



Kit complete with handle, discs and screws for START manifolds - Art. 3874 and MULTIFAR manifolds, 1"1/4 size - Art. 3827.



ART. 8986

Code	€	box
8986 0322		10

Chrome-plated covering cap for articles:
(Art.1116-1117-1126-1127-1136-1137-1146-1147-1420-1430-1431-1432-1433-1435-1436-1437-1438-3458-3459-3859-3860-3869-3870-3872-3873-3875-3876-3900-3901-3906-3920-3927).



ART. 8405

Code	€	box
8405		10

Chrome-plated covering cap in stamped brass for:

Art.1100-1111-1200-1211-1300-1311-1400-1411-1440-1550-1575.



ART. 8400

Code	size	€	box
8400 1238	1/2"-3/8"		10
8400 34	3/4"		10
8400 1	1"		10

Plastic covering cap for:
(Art.1421-1422-1423-1424-1481-1482-1483-1484-1105-1215-1305-1415).



ART. 8406

Code	€	box
8406		10

Brass body for thermostatic valves.



ART. 9000

Code	€	box
9000		10

Stainless steel pin with O-ring for thermostatic valve body and thermo-electric manifolds.



ART. 9050

Code	€	box
9050		10

Brass body for thermostatic valves with presetting.



ART. 9006

Code	€	box
9006		10

Brass body for manual valves.
(Art. 1050-1051-1150-1151)
(Art. 1250-1251-1350-1351)



ART. 9010

Code	size	€	box
9010 1238	1/2" - 3/8"		10
9010 34	3/4"		10

Brass body for lockshield valves.
(Art. 1100-1111-1200-1211)
(Art. 1300-1311-1400-1411-1550)



ART. 9205

Code	size	€	box
9205 1238	1/2" - 3/8"		10
9205 34	3/4"		10

Brass body for thermostatic SINGLE/DOUBLE PIPE valves with adjustable centre distance.
(Art. 1425-1428)



ART. 9009

Code	€	box
9009		10

Brass body for thermo-electric manifolds.



ART. 9140

Code	€	box
9140		10

Brass body for MULTIFAR manifolds with manual control.



ART. 9150

Code	€	box
9150		10

Brass body for MULTIFAR manifolds with built-in regulating valves.



ART. 9200

Code	€	box
9200		10

Brass balancing lockshield valve body for thermo-electric and MULTIFAR manifolds.



ART. 9203

Code	€	box
9203		10

Brass body for START manifolds.



ART. 9145

Code	size	€	box
9145 114112	1"1/4 - 1"1/2		10
9145 2	2"		10

Flow separator for SINGLE-PIPE thermostatic valves. (Art. 1420)

- Complete with EPDM gasket



ART. 8229

Code	€	box
8229		10

Flow separator for Art.1450-1462-1472-1500-1550-1600.

- Complete with EPDM gasket



ART. 8200

Code	€	box
8200		10

Flow separator for reversible union, Art. 8335-8336.



ART. 8220

Code	€	box
8220		10

Flow separator for DOUBLE-PIPE and SINGLE-PIPE thermostatic valves.

(Art.1425-1430-1442-1455-1456-1463-1473)

- Complete with EPDM gasket



ART. 8225

Code	€	box
8225		10

Flow separator for DOUBLE-PIPE and SINGLE-PIPE thermostatic valves (Art.1438).

- Complete with EPDM gasket

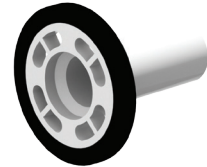


ART. 8226

Code	€	box
8226		10

Flow separator for SINGLE-PIPE manual valves. (Art. 1451-1452).

- Complete with EPDM gasket



ART. 8227

Code	€	box
8227		10

Flow separator for DOUBLE-PIPE and SINGLE-PIPE thermostatic valves with adjustable centre distance (Art.1428).

- Complete with EPDM gasket



ART. 8228

Code	€	box
8228		10

Flow separator for DOUBLE-PIPE valves (Art.1431-1432-1433)



ART. 8230

Code	€	box
8230		10

Flow separator for DOUBLE-PIPE and SINGLE-PIPE valves. (Art. 1435-1436-1437)



ART. 8231

Code	€	box
8231		10

Nut, brass version.



Chrome-plated nut.

- Size 1" for Art. 1420 - 1425- 1428 - 1430

ART. 8240

Code	size	€	box
8240 12	1/2"		10
8240 34	3/4"		10
8240 1	1"		10
8240 114	1"1/4		10
8240 112	1"1/2		10
8240 2	2"		10
8240 214	2"1/4		10

Size 1/2"	for Art.	5140-5150-5190-5200	size 3/8"
Size 3/4"	for Art.	5140-5150-5190-5200-2100	size 1/2"
Size 1"	for Art.	5140-5150-5190-5200	size 3/4"
Size 1"1/4	for Art.	5140-5150-5190-5200	size 1"
Size 1"1/2	for Art.	5140-5150-5190-5200	size 1"1/4
Size 2"	for Art.	5140-5150-5190-5200	size 1"1/2
Size 2"1/4	for Art.	5140-5150-5190-5200	size 2"

ART. 8250

Code	size	€	box
8250 12	1/2"		10
8250 34	3/4"		10
8250 1	1"		10
8250 114	1"1/4		10
8250 112	1"1/2		10
8250 2	2"		10
8250 214	2"1/4		10

Chrome-plated nut in stamped brass for SINGLE-PIPE and DOUBLE-PIPE thermostatic valves (Art. 1433-1435-1436-1437).



ART. 8253

Code	size	€	box
8253 34	3/4"		10

Chrome-plated nut in stamped brass for Art. 1450-1462-1472-1500-1550-1600.



ART. 8150

Code	size	€	box
8150	1"1/4		10

Chrome-plated nut in brass for manual valves, lockshield valves and thermostatic valves.

- Art. 8260 12 for 3/8" valves
- Art. 8260 34 for 1/2" valves
- Art. 8260 1 for 3/4" valves



ART. 8260

Code	thread nut	€	box
8260 12	M22x1,5		10
8260 34	M26x1,5		10
8260 1	M34x1,5		10

Nut for 24x19 threaded copper pipe connections, brass version.



ART. 8270

Code	size	€	box
8270 16	Ø 16		10
8270 18	Ø 18		10
8270 20	Ø 20		10

Chrome-plated nut in stamped brass for 24x19 threaded copper pipe connections.



ART. 8280

Code	size	€	box
8280 16	Ø 16		10
8280 18	Ø 18		10
8280 20	Ø 20		10

Chrome-plated plug for manual valves, lockshield valves and thermostatic valves. Complete with gasket.



ART. 4110

Code	size	€	box
4110 12	1/2"		10
4110 34	3/4"		10

Chrome-plated connection in stamped brass for Art. 1450-1550.

- D = RIGHT THREAD
- S = LEFT THREAD



ART. 8300

Code	probe	size	€	box
8300 1212	Ø 12	1/2"		10
8300 3412	Ø 12	3/4"		10
8300 3414	Ø 14	3/4"		10
8300 114D	Ø 14	1"		10
8300 114S	Ø 14	1"		10

Chrome-plated connection in stamped brass for Art. 1450-1550 for bent probe (Art. 8050-8051).



ART. 8310

Code	size	€	box
8310 12	1/2"		10

Chrome-plated connection in stamped brass for Art. 1420 - 1425- 1428 - 1430 -1438 size 1".

- D = RIGHT THREAD
- S = LEFT THREAD



ART. 8324

Code	probe	size	€	box
8324 1D	Ø 12	1"		10
8324 1S	Ø 12	1"		10

Chrome-plated connection in stamped brass for DOUBLE-PIPE and SINGLE-PIPE thermostatic valves. (Art.1420-1425-1428-1430-1438-1451-1455-1456)



ART. 8325

Code	size	€	box
8325 12	1/2"		10
8325 34	3/4"		10

Chrome-plated connection in stamped brass for DOUBLE-PIPE and SINGLE-PIPE thermostatic valves (Art.1420-1425-1428-1430-1438-1451-1455-1456)
• to be used with bent curve probe (Art. 8050- 8051)



ART. 8326

Code	size	€	box
8326 12	1/2"		10

Chrome-plated connection in stamped brass for SINGLE-PIPE and DOUBLE-PIPE thermostatic valves (Art. 1433-1435-1436-1437).



ART. 8327

Code	size	€	box
8327 12	1/2"		10

Brass flat-faced terminal for pressure reducing valves and strainers.



ART. 8770

Code	size	€	box
8770 12	1/2"		10
8770 34	3/4"		10
8770 1	1"		10
8770 114	1"1/4		10
8770 112	1"1/2		10
8770 2	2"		10

Chrome-plated flat faced terminal for zone valves, filling units, pressure reducing valves and strainers for domestic systems.



ART. 8780

Code	size	€	box
8780 12	1/2"		10
8780 34	3/4"		10
8780 1	1"		10
8780 114	1"1/4		10
8780 112	1"1/2		10
8780 2	1"1/4		10

Terminal provided with EPDM gasket with nut.



ART. 8783

Code	terminal size	thread nut	€	box
8783 38	3/8"	M22x1,5		10
8783 12	1/2"	M26x1,5		10
8783 34	3/4"	M34x1,5		10

Brass terminal for 3-piece connections.



ART. 8790

Code	size	€	box
8790 38	3/8"		10
8790 12	1/2"		10
8790 34	3/4"		10
8790 1	1"		10
8790 114	1"1/4		10
8790 112	1"1/2		10
8790 2	2"		10

Chrome-plated terminal for 3-piece connections.



ART. 8800

Code	size	€	box
8800 38	3/8"		10
8800 12	1/2"		10
8800 34	3/4"		10
8800 1	1"		10
8800 114	1"1/4		10
8800 112	1"1/2		10
8800 2	2"		10

Terminal provided with Loctite® Dri-Seal® 5061 for valves and lockshield valves.



ART. 8803

Code	size	€	box
8803 38	3/8"		10
8803 12	1/2"		10

1/2" brass reduction connection for strainer, ART. 3930 34.

- For 1" nut



ART. 8781

Code	size	€	box
8781 12	1/2"		10

Chrome-plated 1/2" reduction connection for strainer, ART. 3932 34.

- For 1" nut



ART. 8782

Code	size	€	box
8782 12	1/2"		10

Chrome-plated 3/8" reduction connection for valve body, 1/2" size. (Art. 1116 38 - 1117 38 - 1126 38 - 1127 38 - 1615 38 - 1616 38 - 1617 38 - 1626 38 - 1627 38)



ART. 0405

Code	size	€	box
0405 38	3/8"		10

M6 STAINLESS STEEL screw for flanged manifolds and supports for metal brackets.



ART. 8560

Code	€	box
8560		10

Allen screw for coplanar manifold. (Art.3750-3751).



ART. 8550

Code	€	box
8550		10

STAINLESS STEEL self-tapping screws for "TUTTO" boxes, supports for manifold and ACQUAFAR fittings.

- 8555 10 for Art. 5650-5700-5750-5840-5845-5850
- 8555 32 for Art. 7480-7490-7500-7510-7550
- 8555 38 for Art. 6140-6141-7410-7420-7425-7450-7460



ART. 8555

Code	length/mm	Ø	€	box
8555 10	10	3,9		10
8555 32	32	3,9		10
8555 38	38	3,9		10

Chrome-plated screw for regulating handle (Art. 8100-8125-8130-8126-8980-8981).



ART. 8750

Code	size	€	box
8750	3/16		10

Pipe guide brass washer for copper pipe.



ART. 8575

Code	size	€	box
8575 10	Ø 10		10
8575 12	Ø 12		10
8575 14	Ø 14		10

Reduction in brass for copper pipe locking.



ART. 8600

Code	size	€	box
8600 10	Ø 10		10
8600 12	Ø 12		10
8600 14	Ø 14		10
8600 15	Ø 15		10
8600 16	Ø 16		10
8600 18	Ø 18		10
8600 20	Ø 20		10
8600 22	Ø 22		10

Reduced reduction in brass for copper pipe locking for Art. 5065-5075-5080-5085-5090.



ART. 8625

Code	size	€	box
8625 8	Ø 8		10
8625 10	Ø 10		10
8625 12	Ø 12		10

Brass pipe clamping ring for fittings for plastic and multilayer pipe.



ART. 6070

Code	size	€	box
6070 58	Ø 16		10
6070 80	Ø 20		10

Sealing seats for 3-piece connections.



ART. 8700

Code	size	€	box
8700 38	3/8"		10
8700 12	1/2"		10
8700 34	3/4"		10
8700 1	1"		10
8700 114	1"1/4		10
8700 112	1"1/2		10
8700 2	2"		10

EPDM gasket for zone valves, filling units, pressure reducing valves and strainers for domestic systems.



ART. 8722

Code	size	€	box
8722 12	1/2'		10
8722 34	3/4"		10
8722 1	1"		10
8722 114	1"1/4		10
8722 112	1"1/2		10
8722 2	2"		10
8722 214	2"1/4		10

Spare gasket.

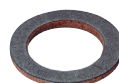
- Code 8724 30 for Art. 8225
- Code 8724 39 for Art. 8200



ART. 8724

Code	size	€	box
8724 30	Ø 30		-
8724 39	Ø 39		-

Gold gasket for zone valves, filling units, pressure reducing valves and strainers for domestic systems.



ART. 8725

Code	size	€	box
8725 34	3/4"		10
8725 1	1"		10
8725 114	1"1/4		10
8725 112	1"1/2		10

Plastic lever for actuator complete with screw.

- 8977 N for art. 3005-3006-3007-3008
- 8977 R for art. 3010-3011



ART. 8977

Code	colour	€	box
8977 N	black		-
8977 R	red		-

Sealing washer in nylon for blind plugs.
(Art. 4000-4099-4100)



ART. 8727

Code	size	€	box
8727 12	1/2"		10
8727 34	3/4"		10
8727 1	1"		10
8727 114	1"1/4		10
8727 112	1"1/2		10
8727 2	2"		10

Filter for filling unit
(Art. 2100 -2105 - 2106 - 2110).



ART. 8500

Code	€	box
8500		10

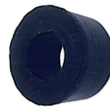
Rubber compression single-taper for copper pipe.



ART. 8450

Code	size	€	box
8450 10	Ø 10		10
8450 12	Ø 12		10
8450 14	Ø 14		10
8450 15	Ø 15		10
8450 16	Ø 16		10
8450 18	Ø 18		10
8450 20	Ø 20		10
8450 22	Ø 22		10

Compression reduced single-taper in rubber for copper pipe for Art. 5065-5070-5075 5080-5085-5090.



ART. 8475

Code	size	€	box
8475 8	Ø 8		10
8475 10	Ø 10		10
8475 12	Ø 12		10

Spare O-ring.

- 8350 1877 for Art 6002
- 8350 192 for Art 6002
- 8350 2824 for Art 3750-3751 size: 3/4"
- 8350 3459 for Art 3750-3710-3410-3441-3443-3445-3916-3915-3914-3751 size: 1"

ART. 8350

Code	size	€	box
8350 1877	18,77x1,78		10
8350 192	19x2		10
8350 2824	28,24x2,62		10
8350 3459	34,59x2,62		10



Kit for MULTIFAR manifolds complete with handle, discs and screws.



ART. 8985

Code	€	box
8985 0316		1

BLUE-RED double face disc for MULTIFAR manifolds.



ART. 8950

Code	€	box
8950 03		10

Double face disc for manifolds with descriptions for domestic and heating systems.



ART. 8975

Code	€	box
8975 16		10

Silk-screen printed disc for Art. 1550.



ART. 8655

Code	€	box
8655		10

Threaded metal probe for single-pipe valves.



ART. 8000

Code	length/cm	Ø	€	box
8000 1045	45	10		1
8000 1070	70	10		1
8000 10100	100	10		1
8000 1245	45	12		1
8000 1270	70	12		1
8000 12100	100	12		1
8000 1445	45	14		1
8000 1470	70	14		1
8000 14100	100	14		1

Single-panel bent probe for panel radiators.



ART. 8050

Code	type	Ø	€	box
8050	1 rank	11		1

Double-panel bent probe for panel radiators.



ART. 8051

Code	type	Ø	€	box
8051	2 ranks	11		1

Polygonal open wrench for 27 hexagon nuts.

- galvanized finish



ART. 6000

Code	size	€	box
6000	HEX 27		1

Case complete with:

- Polygonal wrench for 27 hexagonal nuts
- Ratchet wrench for 3/8"-1/2"-3/4" terminals



ART. 7405

Code	€	box
7405		1

Double hexagonal wrench for 30-38 hexagon nuts.

- galvanized finish



ART. 6001

Code	size	€	box
6001	HEX 30-38		1

Polygonal open wrench for 27-30 hexagon nuts.

- galvanized finish
- CH 27 for 24x19 nuts
- CH 30 for 3/4" nuts for eurokonus adapters



ART. 6004

Code	size	€	box
6004	HEX 27-30		1

Allen key for regulation of lockshield valves and fixing terminals to radiators.

- Hex. 5 wrench : Coplanar manifolds
- Hex. 9 wrench : 3/8" terminal
- Hex. 13 wrench : 1/2" terminal



ART. 6250

Code	size	€	box
6250 5	HEX 5		1
6250 9	HEX 9		1
6250 13	HEX 13		1

Key with square head for air vent valves
Art. 6010-6020



ART. 6300

Code	size	€	box
6300	5		1